

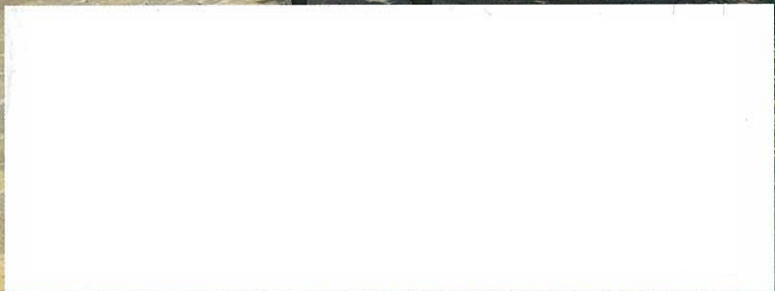
**vmsd.** • Experience Retail Now

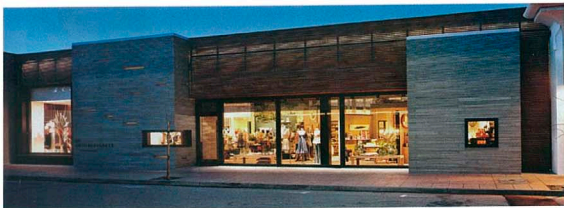
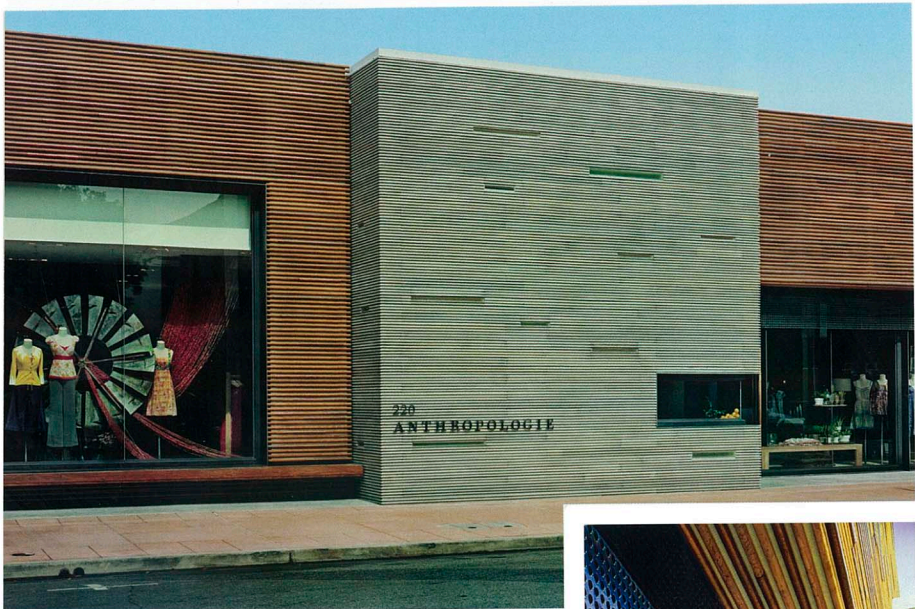
OCTOBER 2008  
vmsd.com

# THE GREEN ISSUE

Retailers show off their eco-sides

- + Green acres: Why Kroger is grabbing for the LEED
- + Cell phones bust out of the kiosk
- + Cartier's holiday facelift





**BURLINGAME, CALIF.**

This freestanding street location was meant to reflect the Northern California sensibilities of this town on the San Francisco Bay south of the city. "The concrete and wood façade is evocative of the northern California coast," Osler says.

The façade is formed by a series of layers. A portion of the flat, square exterior is made of ipe, a Brazilian teak-like hardwood. A screen of pipe wood and copper rods intersects with stacked concrete bays, running through the surface like a necklace. "We didn't want a solid wood façade," says Osler. "We



wanted to evoke the feeling of the trees along the coast that are blown and shaped by the wind." Concrete blocks form the solid portion of the outside wall.

A window shade-like material forms a screen behind the outer surfaces, blocking out UV rays but allowing light to play through the solid wall. At night, the store will glow with lighting concealed behind the screen, revealing the layers of materials and dematerializing the perimeter shell, "shining," says Osler, "like light in a forest."